



 paulwallace

Ash Meadow, Much Hadham, SG10 6DP |  
£389,995 | Freehold

## Ash Meadow, Much Hadham, SG10 6DP

This chain-free end terrace property, originally a three-bedroom house has been reconfigured to provide two double bedrooms and offers potential to extend to the side and /or rear, subject to planning permission, with a large south-east facing garden providing stunning countryside views. Situated in the peaceful and highly desirable village location of Much Hadham, this home benefits from gas central heating, an attractive kitchen and bathroom / w.c., as well as a spacious lounge, fitted wardrobes, and an allocated parking space.

### Key features

- Originally three-bedrooms, reconfigured to provide two double bedrooms
- Potential to extend to the side and / or rear, subject to planning
- Gas central heating
- Allocated parking space
- Stunning countryside views
- Peaceful and highly desirable village location
- Desirable location
- Chain free

### Property Information

Tenure  
Freehold  
Council Tax  
D  
EPC Rating  
D  
Local Authority  
East Hertfordshire District Council



 paulwallace  
estate agents

[hoddesdon@paulwallace.co.uk](mailto:hoddesdon@paulwallace.co.uk)

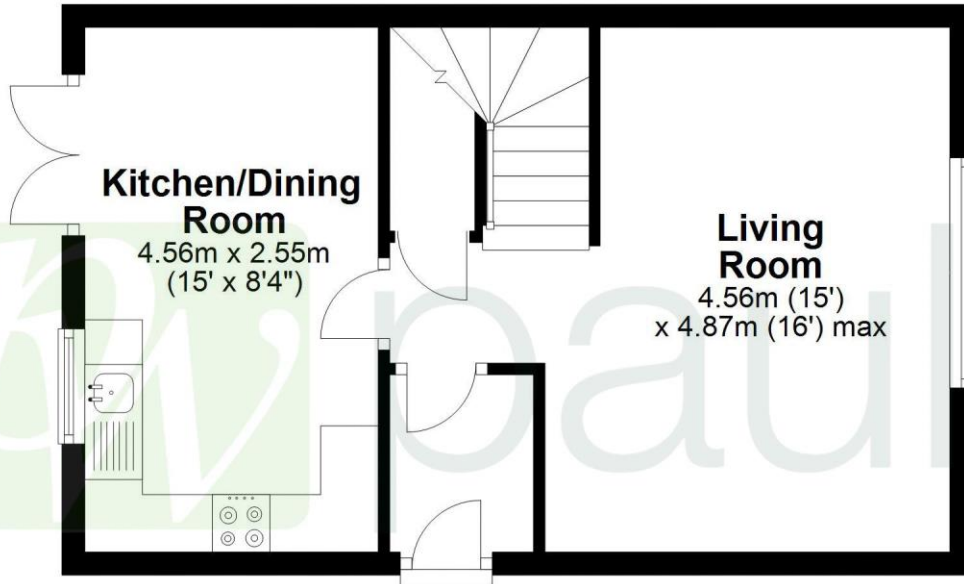
01992 466471





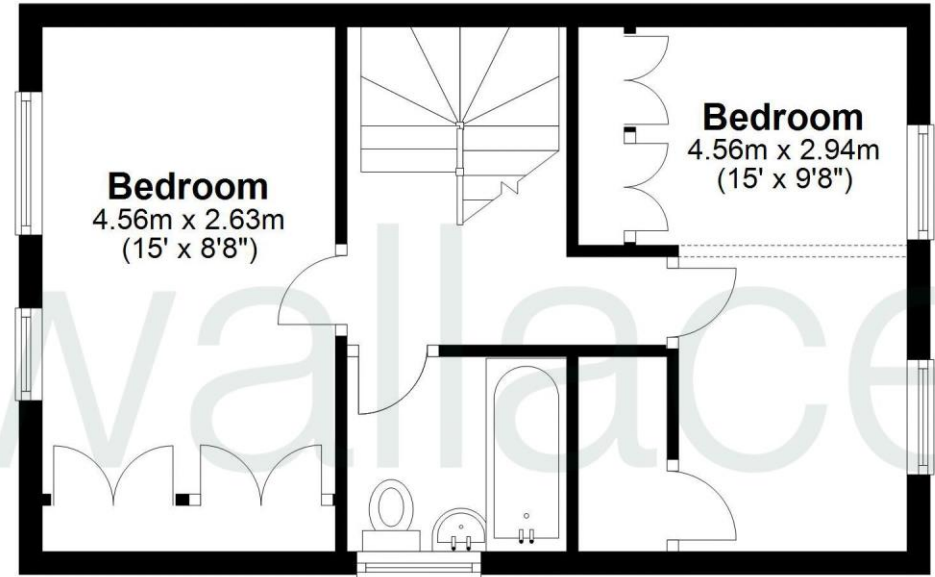
## Ground Floor

Approx. 35.1 sq. metres (378.2 sq. feet)



## First Floor

Approx. 35.0 sq. metres (377.1 sq. feet)



Total area: approx. 70.2 sq. metres (755.3 sq. feet)

FOR ILLUSTRATIVE PURPOSES ONLY, NOT TO SCALE

Whilst every attempt has been made to ensure the accuracy of the floor plan shown, all measurements, positioning, fixtures, features, fittings and any other data shown are an approximate interpretation for illustrative purposes only and are not to scale. No responsibility is taken for any error, omission, miss-statement or use of data shown.

Property marketing provided by [www.matthewkyle.co.uk](http://www.matthewkyle.co.uk)





Registered Address: Unit 3 The Brookfield Centre, Cheshunt, Herts, EN8 0NN Company Registration Number: OC414280 | VAT Number: 276958046©2022 Paul Wallace Group LLP trading as Paul Wallace Estate Agents



### Paul Wallace Estate Agents

70 High Street  
Hoddesdon  
Hertfordshire  
EN11 8ET

 01992 466471

 [hoddesdon@paulwallace.co.uk](mailto:hoddesdon@paulwallace.co.uk)

 [www.paulwallace.co.uk](http://www.paulwallace.co.uk)



### Opening Times

Mon	9am to 6.30pm
Tues	9am to 6.30pm
Wed	9am to 6.30pm
Thurs	9am to 6.30pm
Fri	9am to 6.30pm
Sat	9am to 5.00pm
Sun	Closed



Agents Note: Whilst every care has been taken to prepare these sales particulars, they are for guidance purposes only. All measurements are approximate and are for general guidance purposes only and whilst every care has been taken to ensure their accuracy, they should not be relied upon. Potential buyers are advised to recheck the measurements.